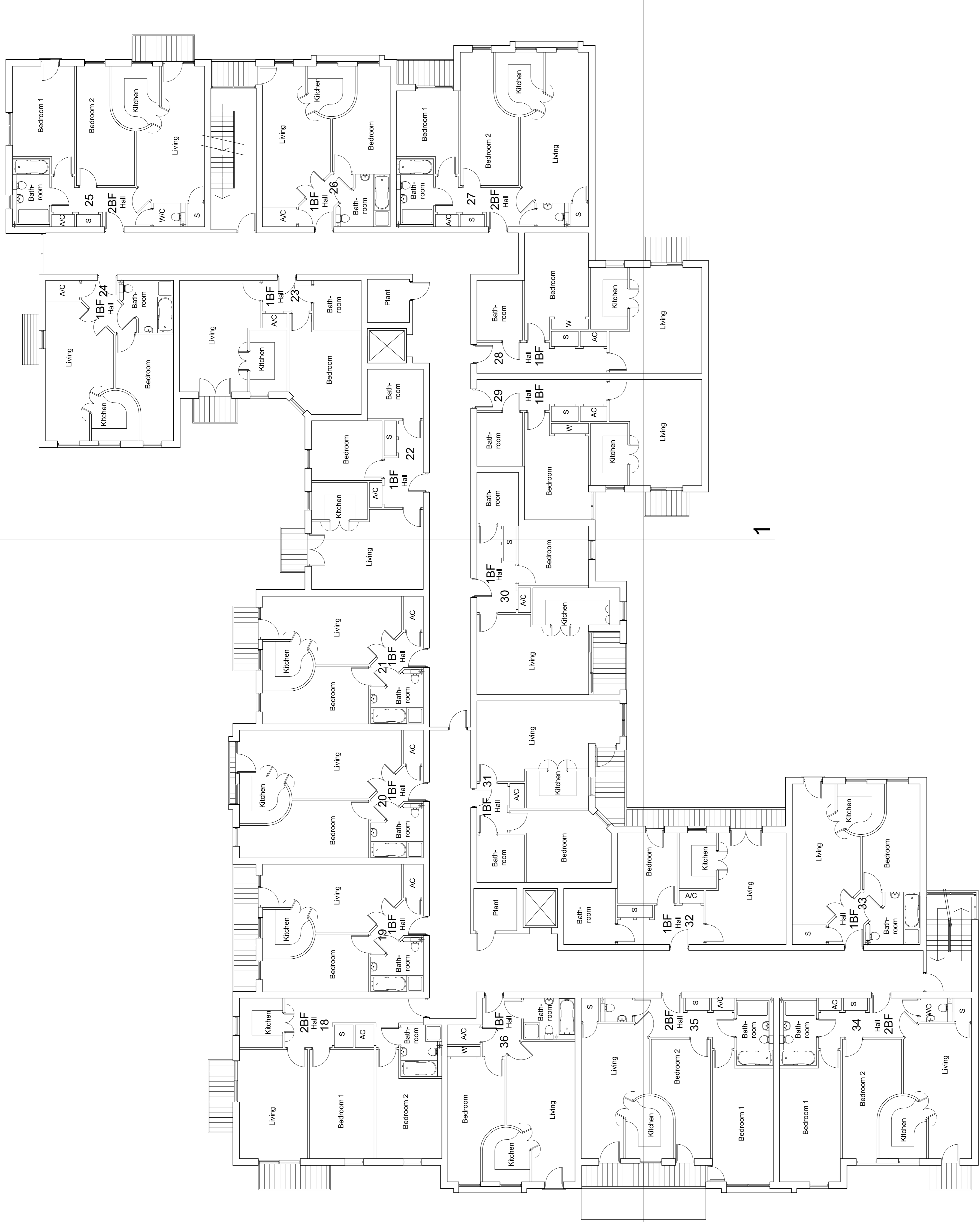


**NOTES:**

1. The contents of this drawing are copyright
2. There is no Apartment 13

ACCOMMODATION SCHEDULE	Ground Floor	First Floor	Second Floor	TOTAL
1 Bedroom Apartments	12	14	13	39
2 Bedroom Apartments	4	5	4	13
Total Apartments	16	19	19	52
Gross Internal Area (sqm)	1417	1401	1374	4192



**FIRST FLOOR PLAN**



B 05.06.14 Flat 23 Layout amended, 2nd lift added. SD SD  
 A 20.02.14 Balcony to Flat 24 removed. CS NJL

Revised Date Description By PM  
 REVISIONS

**PLANNING**

Renaissance Retirement Ltd

Project Location:  
 New Sheltered Apartments  
 Duttons Road, Romsey

Proposed First Floor Plan

Scale: A1: 1:300 Date: 11/11/13  
 No: 21113  
 Drawing No: ASP.13.035.103

Revision: B

ARCHITECTURE - PLANNING - PROJECT MANAGEMENT - COM

Gabriel Sabin, Steven Collins, T1 Dargatzis,  
 Consultants, Level: 0103 174

01202 472822  
 www.aspirearchitects.co.uk  
 info@aspirearchitects.co.uk

© Aspire Architects LLP

